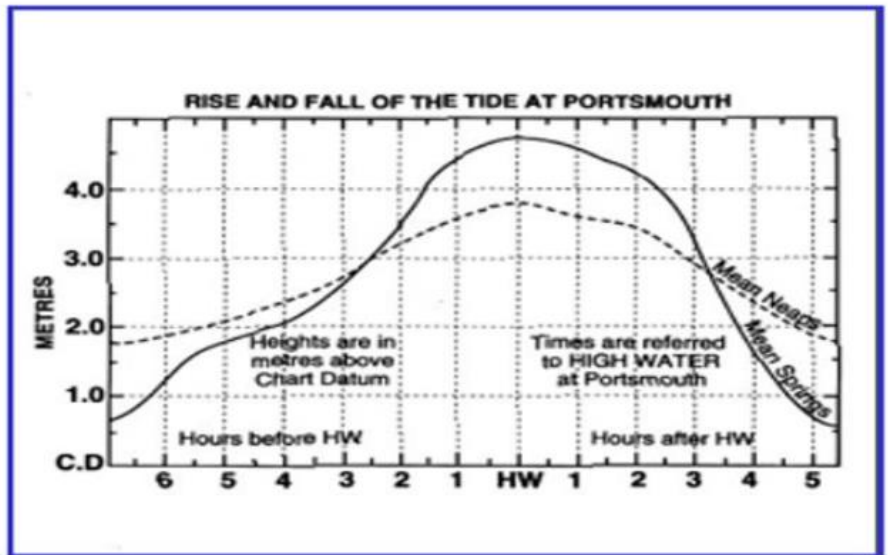


**PASSAGE PLAN**

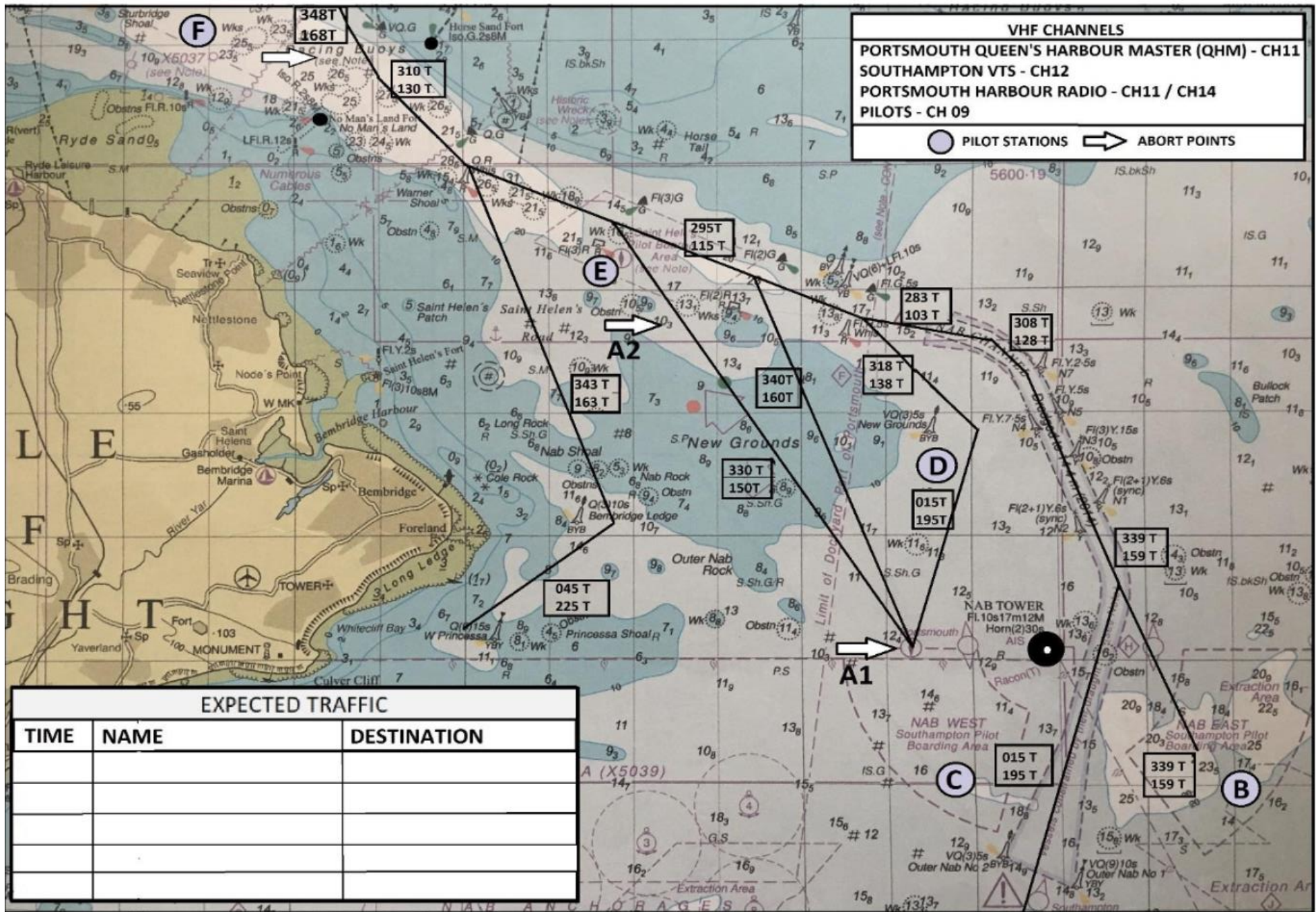
**NAB TOWER TO 'PIP' WITH WIND GRAPH**

SHIP'S NAME:				DATE:			ETA/ETD:	
BERTH/P STN:				LAST/NEXT PORT:				
BERTH/P STN:	To			OTHER DETAILS:				
DRAFT:		LOA:		IMDG:		TUGS:		

Passage Times	



Under Keel Clearance (UKC) Calculations			
Time of HW Portsmouth and Height of HW		Next LW and Height	
Vessel's ETA/ETD		Tidal Range	
Area	East Solent / Pilot Station	Upper Harbour	Berth
Interval from HW			
Predicted Height of Tide			
Least Charted Depth			
Meteorological Correction (+/-)			
Corrected Depth of Water			
Ship's Draft			
Squat effect?			
Calculated UKC			
UKC Required			



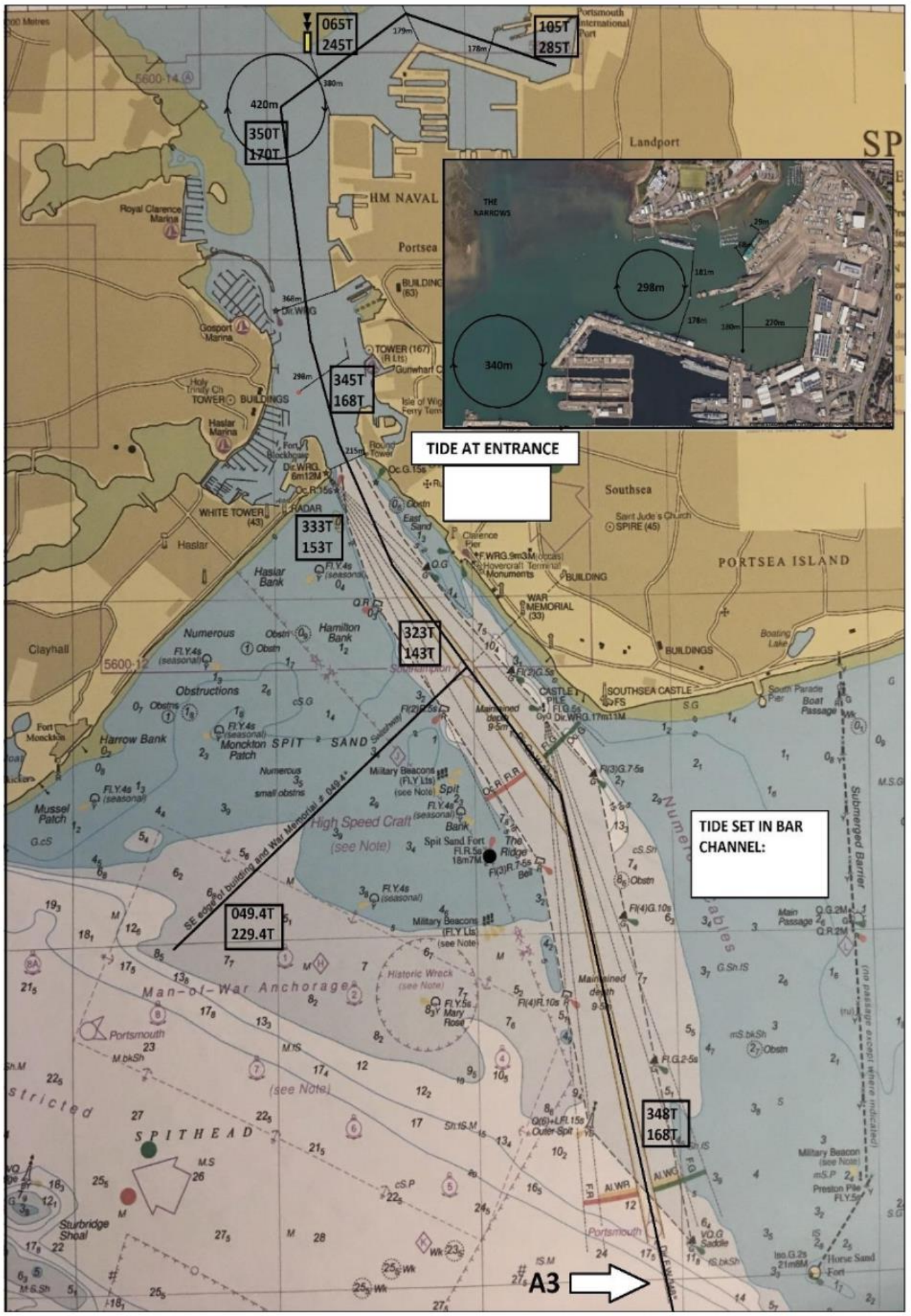
**VHF CHANNELS**

PORTSMOUTH QUEEN'S HARBOUR MASTER (QHM) - CH11  
 SOUTHAMPTON VTS - CH12  
 PORTSMOUTH HARBOUR RADIO - CH11 / CH14  
 PILOTS - CH 09

PILOT STATIONS    ABORT POINTS

EXPECTED TRAFFIC		
TIME	NAME	DESTINATION





TIDE AT ENTRANCE



TIDE SET IN BAR CHANNEL:

A3 →

TIME		NAB TOWER (EAST)			WARNER	OUTER SPIT BUOY (7 CABLES SW)			ENTRANCE							
		Dir (°)	Spr (knt)	Np (knt)		Dir (°)	Spr (knt)	Np (knt)		Dir (°)	Spr (knt)	Np (knt)				
	6B	085	0.7	0.3		122	0.6	0.3		089	0.7	0.4		336	1.2	0.3
	5B	078	1.6	0.8		129	1.2	0.6		115	1.1	0.5		341	0.9	0.3
	4B	078	1.8	0.9		129	1.3	0.7		117	1.4	0.7		336	0.4	0.5
	3B	065	1.5	0.8		144	0.5	0.3		109	0.8	0.4		338	1.5	1.0
	2B	048	0.9	0.4		335	0.4	0.2		033	0.3	0.1		343	2.8	1.3
	1B	345	0.2	0.1		314	1.0	0.5		327	0.4	0.2		342	2.8	1.2
	HW	282	1.3	0.7		311	1.5	0.8		292	1.2	0.6		329	0.4	0.2
	1A	265	1.5	0.7		311	1.7	0.9		293	1.8	0.9		165	0.9	0.5
	2A	252	1.6	0.8		313	1.0	0.5		288	1.5	0.7		164	1.6	1.5
	3A	236	1.2	0.6		168	0.2	0.1		231	0.4	0.2		159	4.1	1.9
	4A	218	0.9	0.4		149	0.9	0.5		152	0.5	0.3		155	3.0	1.0
	5A	193	0.4	0.2		141	0.7	0.3		131	0.4	0.2		161	0.9	0.2
	6A	095	0.4	0.2		111	0.4	0.2		080	0.6	0.3		334	0.9	0.3

Master - Pilot Exchange	Y/N
Any vessel defects?	
Pilot Card provided?	
Anchors ready to let go?	
Main engines tested astern?	
Language agreed to be English?	
Passage Plan and Berth Plan agreed?	
Weather:	
Tugs required? SWL of ship's bits?	
Instruction - No weighted monkey fists	
Await tug request before lowering or hauling	
Notes:	

% Mean Springs		
Location	Set	Rate

Berth Details			
Berth	Length	Berth	Length
AJQ	245*	PIP 4	215
FHQ	170 *	PIP 5	125
PIP 1	70	N Quay	75
PIP 2	250 *	O Berth	55
PIP 3	210		

